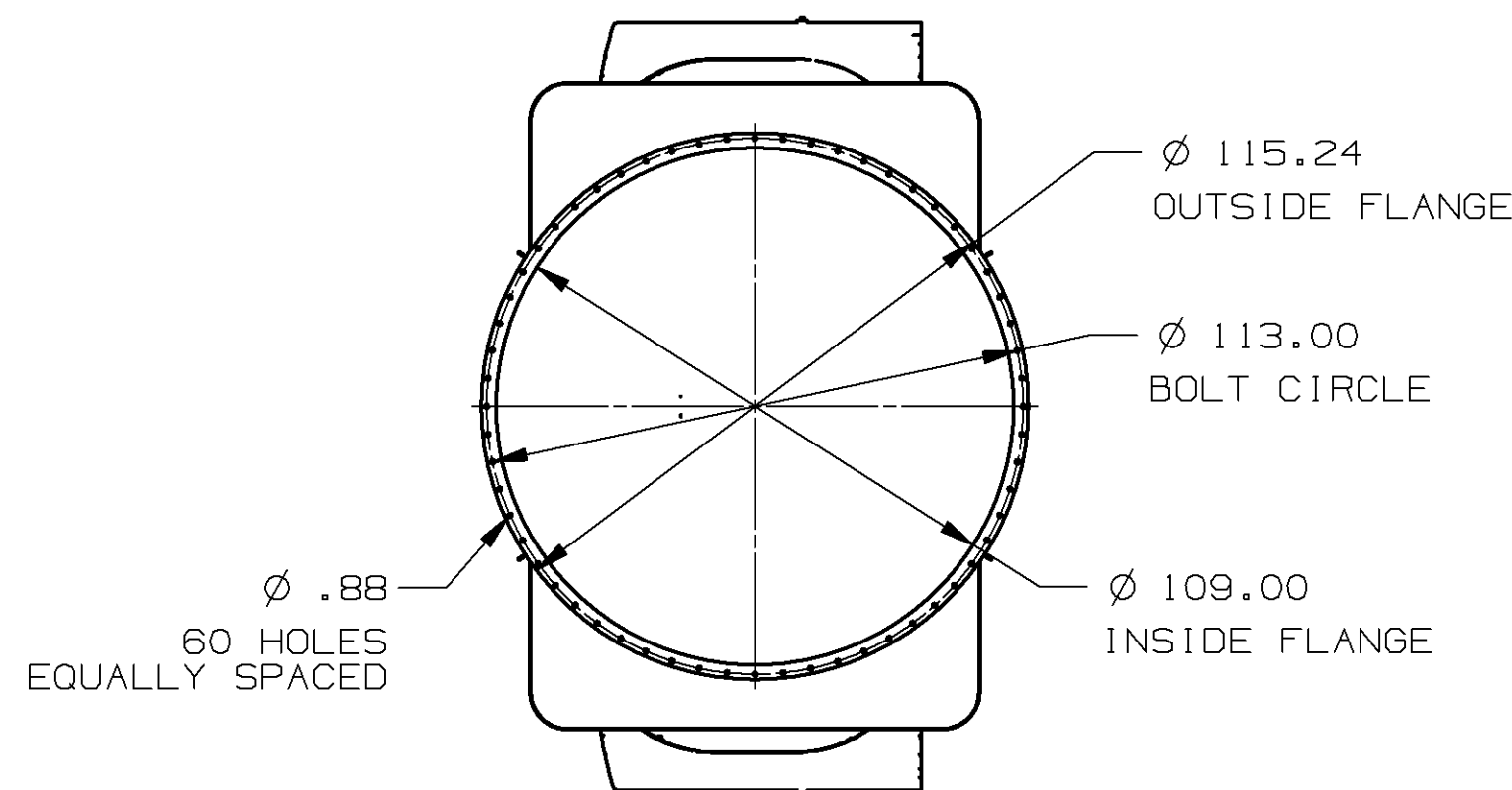
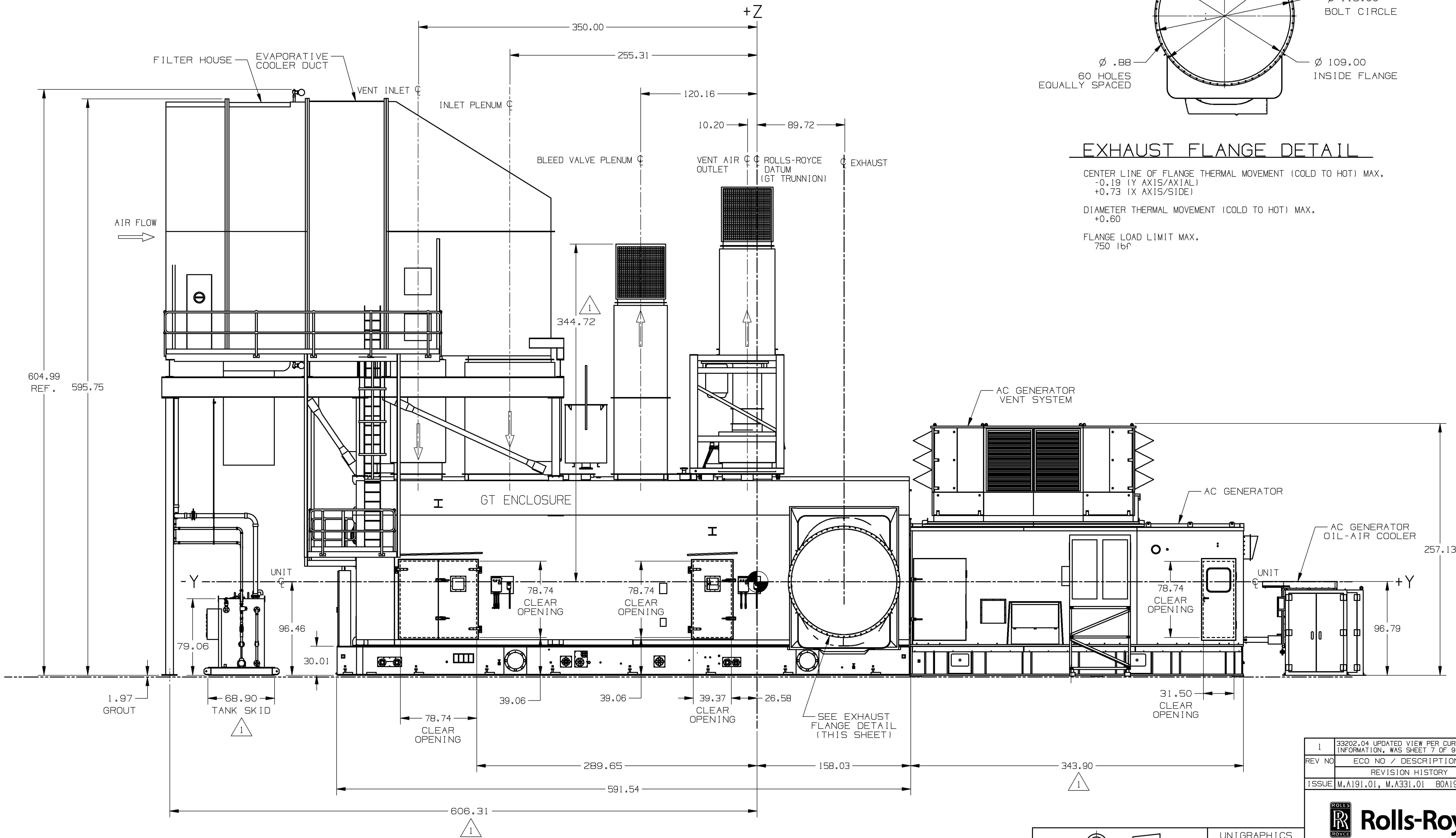


12 11 10 9 8 7 6 5 4 3 2 1

IEA \* 07015-11210 \* 12/16/08



### EXHAUST FLANGE DETAIL

CENTER LINE OF FLANGE THERMAL MOVEMENT (COLD TO HOT) MAX.  
-0.19 (Y AXIS/AXIAL)  
+0.73 (X AXIS/SIDE)

DIAMETER THERMAL MOVEMENT (COLD TO HOT) MAX.  
+0.60

FLANGE LOAD LIMIT MAX.  
750 lbf

### LEFT SIDE ELEVATION

THIRD ANGLE PROJECTION

©ROLLS-ROYCE ENERGY SYSTEMS INC. 2008  
THE INFORMATION IN THIS DOCUMENT IS THE  
PROPERTY OF ROLLS-ROYCE ENERGY SYSTEMS INC.  
AND MAY NOT BE COPIED, COMMUNICATED TO A  
THIRD PARTY, OR USED FOR ANY PURPOSE OTHER  
THAN FOR WHICH IT IS SUPPLIED, WITHOUT THE  
EXPRESS WRITTEN CONSENT OF ROLLS-ROYCE  
ENERGY SYSTEMS INC.

UNIGRAPHICS  
DRAWING

ENGR. 2: -  
ENGR. 1: RD  
APPR. BY: EA  
CHKD. BY: KMD  
DRAWN BY: ADK  
DWG. DATE: 28MAR08

1	33202.04 UPDATED VIEW PER CURRENT INFORMATION, WAS SHEET 7 OF 9	OSDEC08
REV NO	ECO NO / DESCRIPTION	ADK
	REVISION HISTORY	DATE
ISSUE	M.A191.01, M.A331.01	BY
	80A19101, 80A33101	



**Rolls-Royce**

ROLLS-ROYCE ENERGY SYSTEMS INC.  
MOUNT VERNON OHIO 43050 USA

ROLLS-ROYCE POWER ENGINEERING PLC  
BOOTLE, MERSEYSIDE L30 4LZ ENGLAND

GENERAL ARRANGEMENT

SIZE	A1	GED00017367	REV	1
SCALE:	NTS		SHEET:	7 OF 10

12 11 10 9 8 7 6 5 4 3 2 1

ALL SHEETS ARE THE SAME REVISION STATUS.